

Are some packings more equal than others?

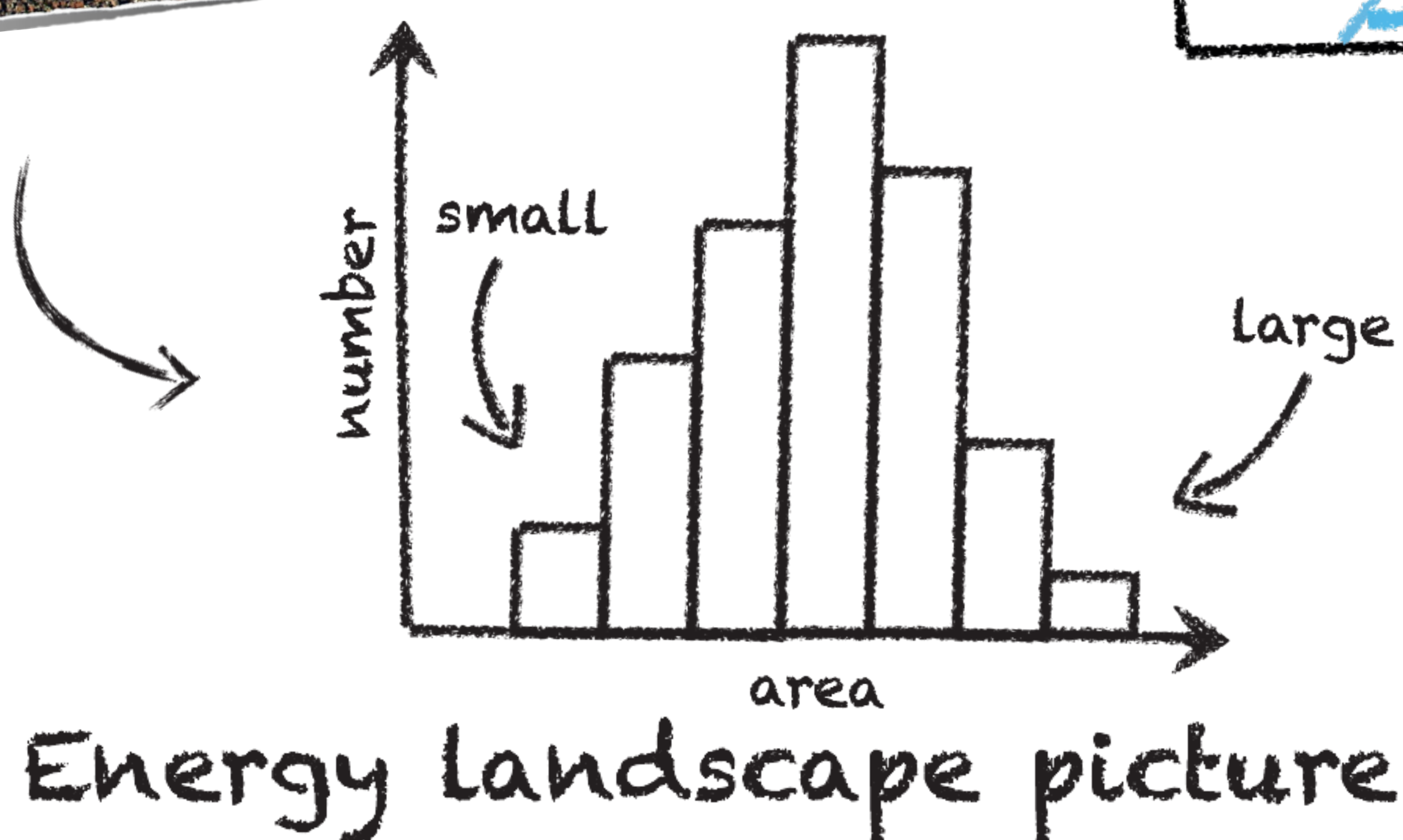
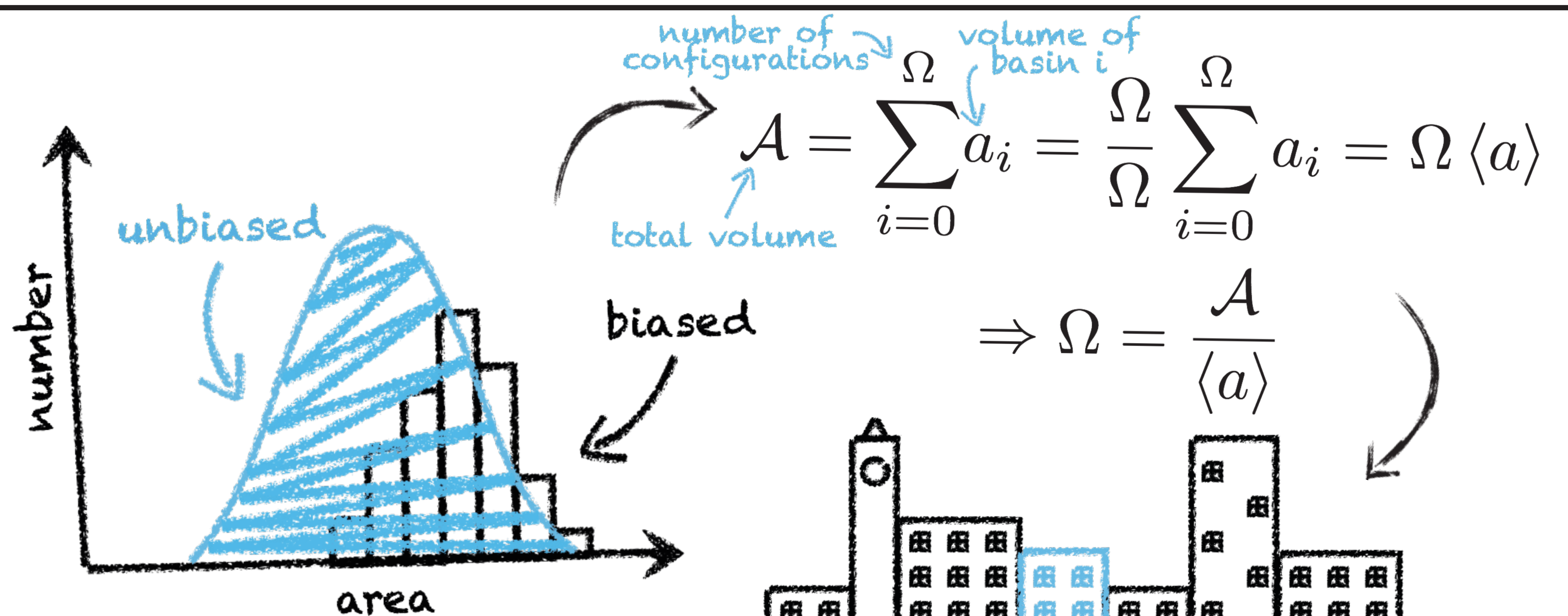
A direct test of the Edwards conjecture



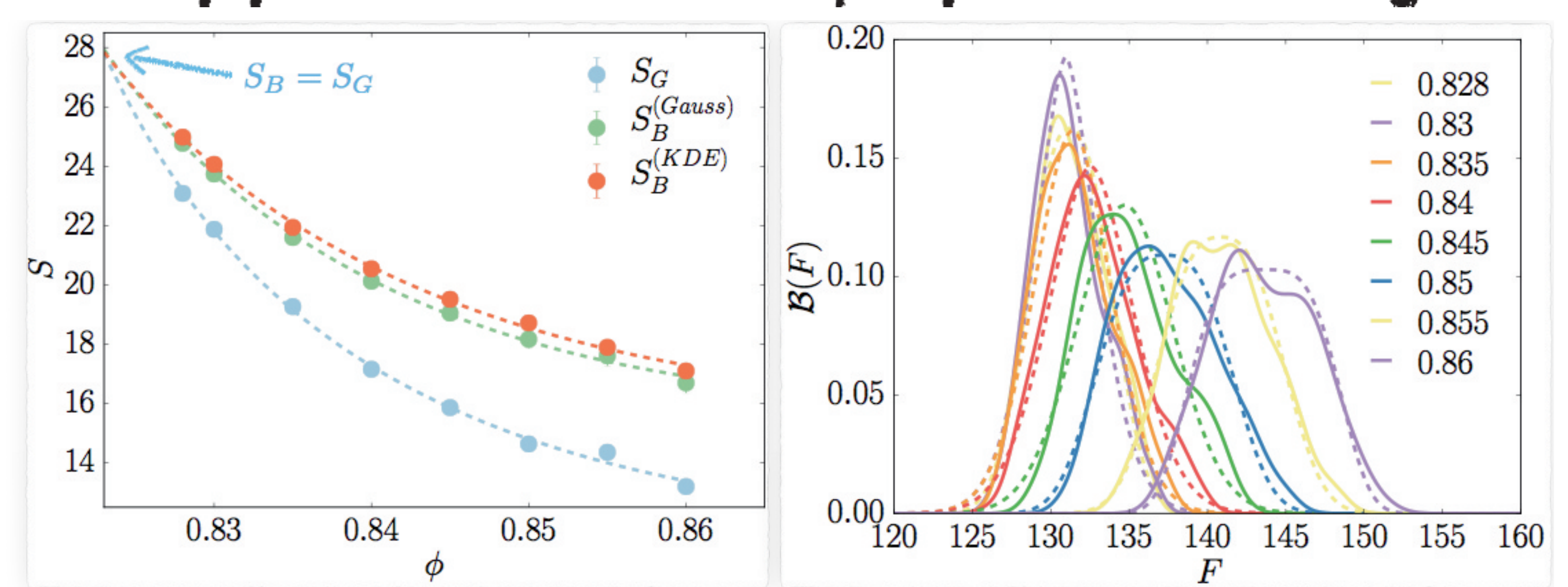
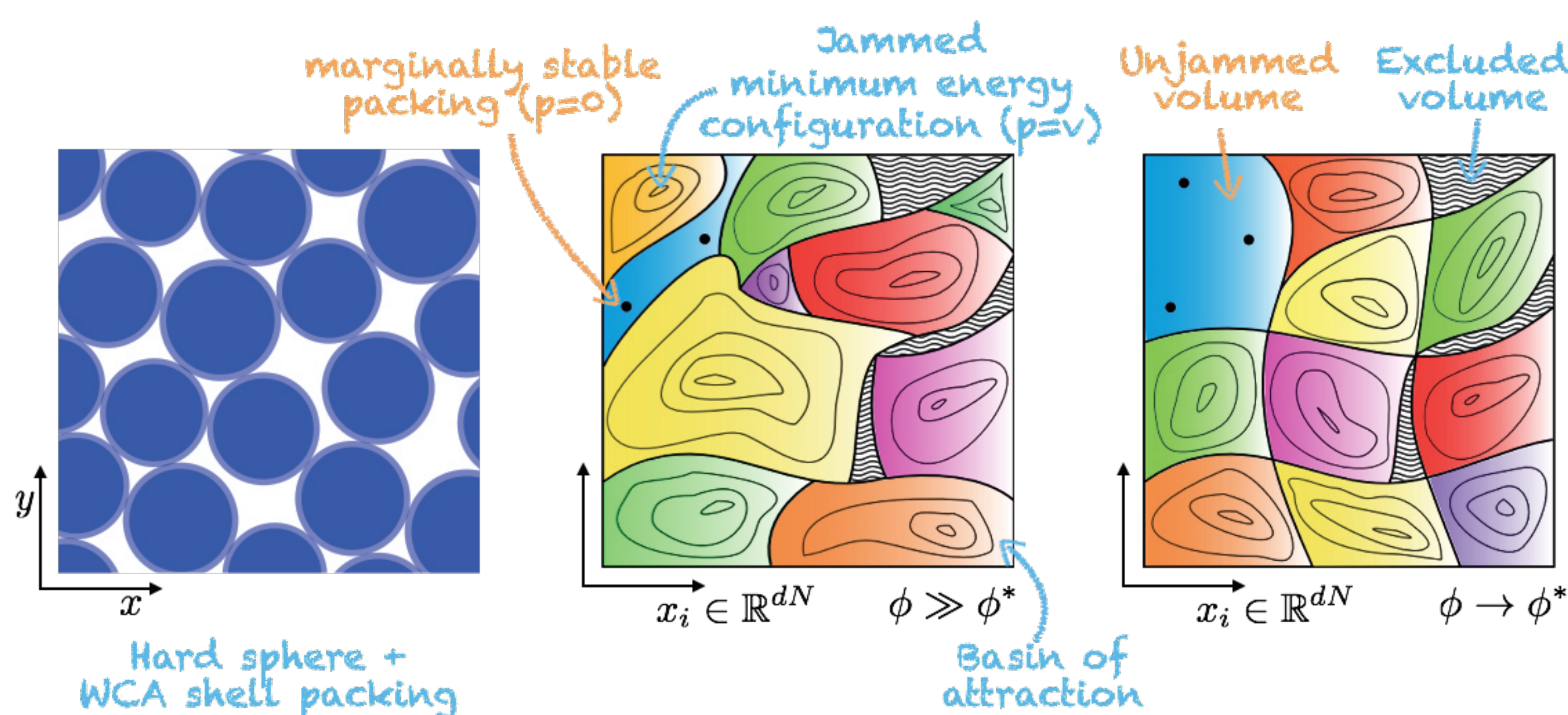
Stefano Martiniani¹, Julian K. Schrenk¹, Kabir Ramola², Bulbul Chakraborty², Daan Frenkel¹

¹Department of Chemistry, University of Cambridge, Lensfield Road, Cambridge, CB2 1EW, UK

²Martin A. Fisher School of Physics, Brandeis University, Waltham, MA 02454, USA

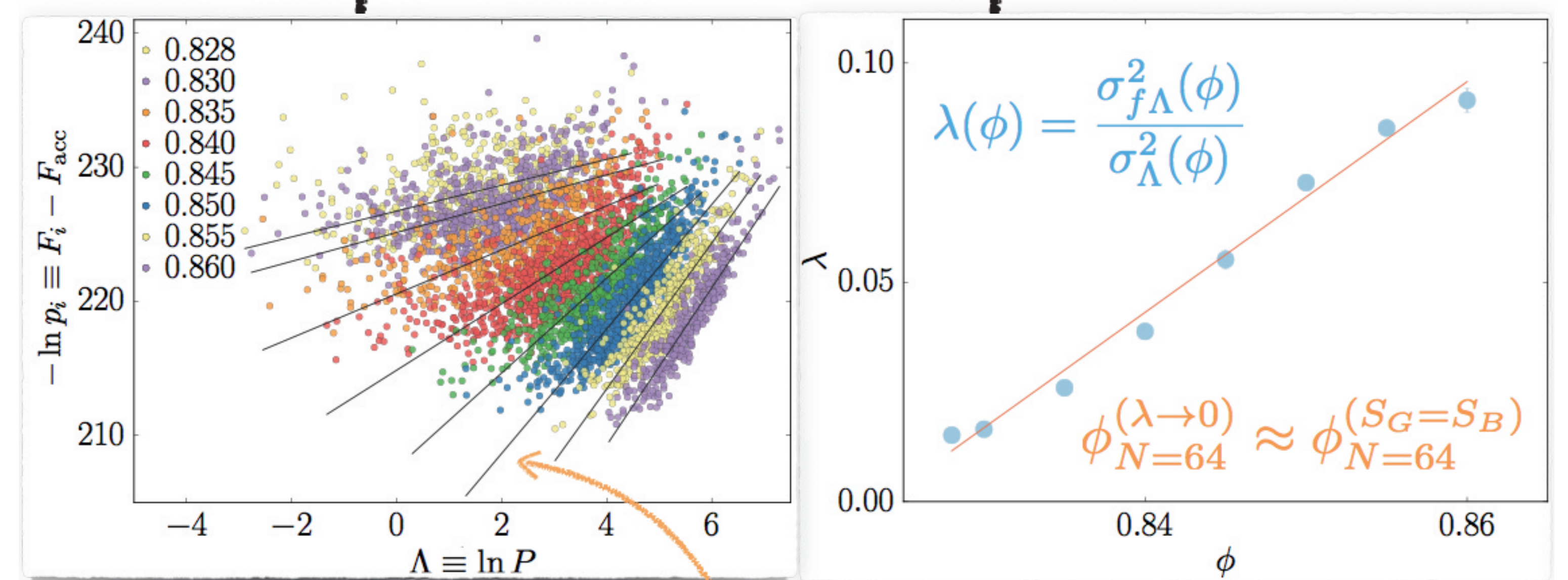
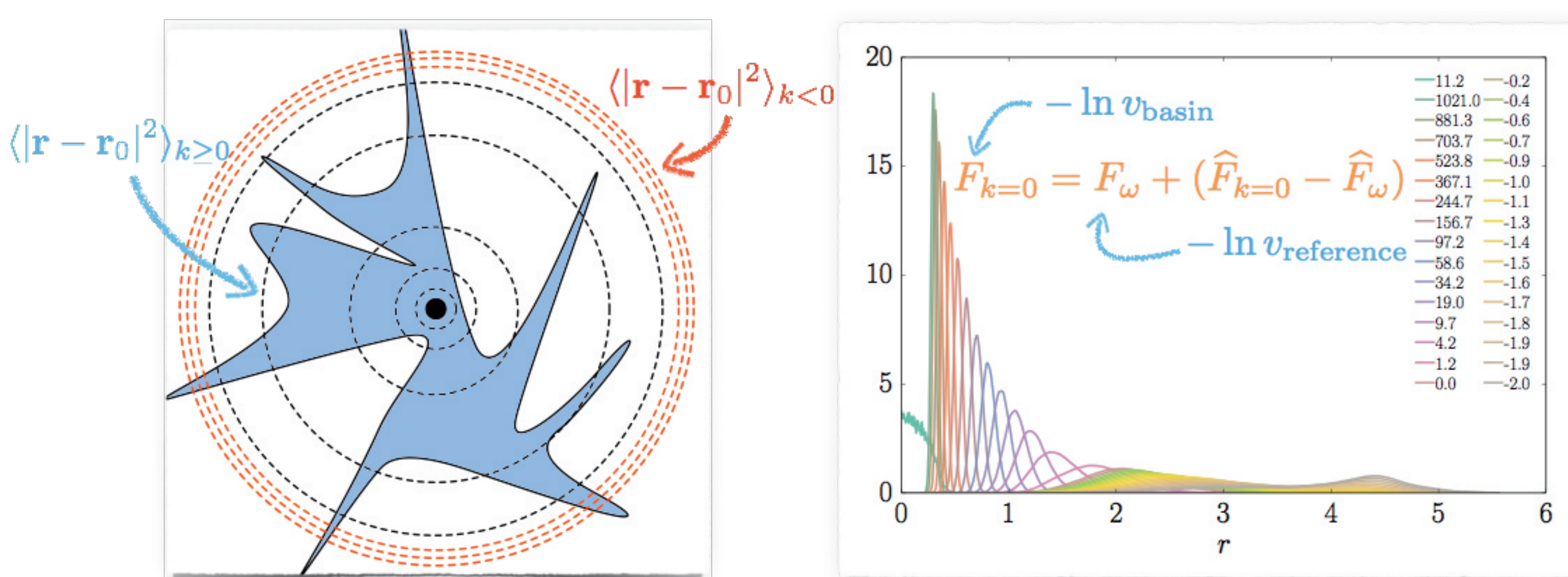


Approaching equiprobability



Dependence on pressure

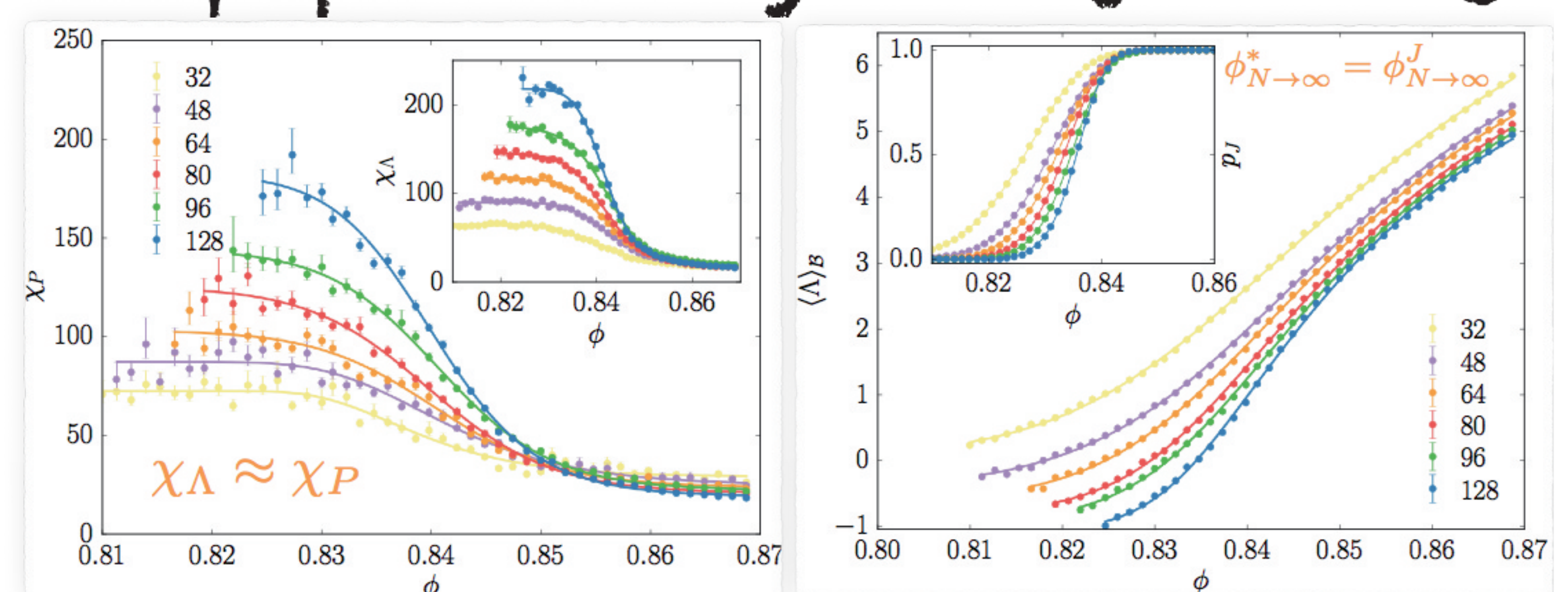
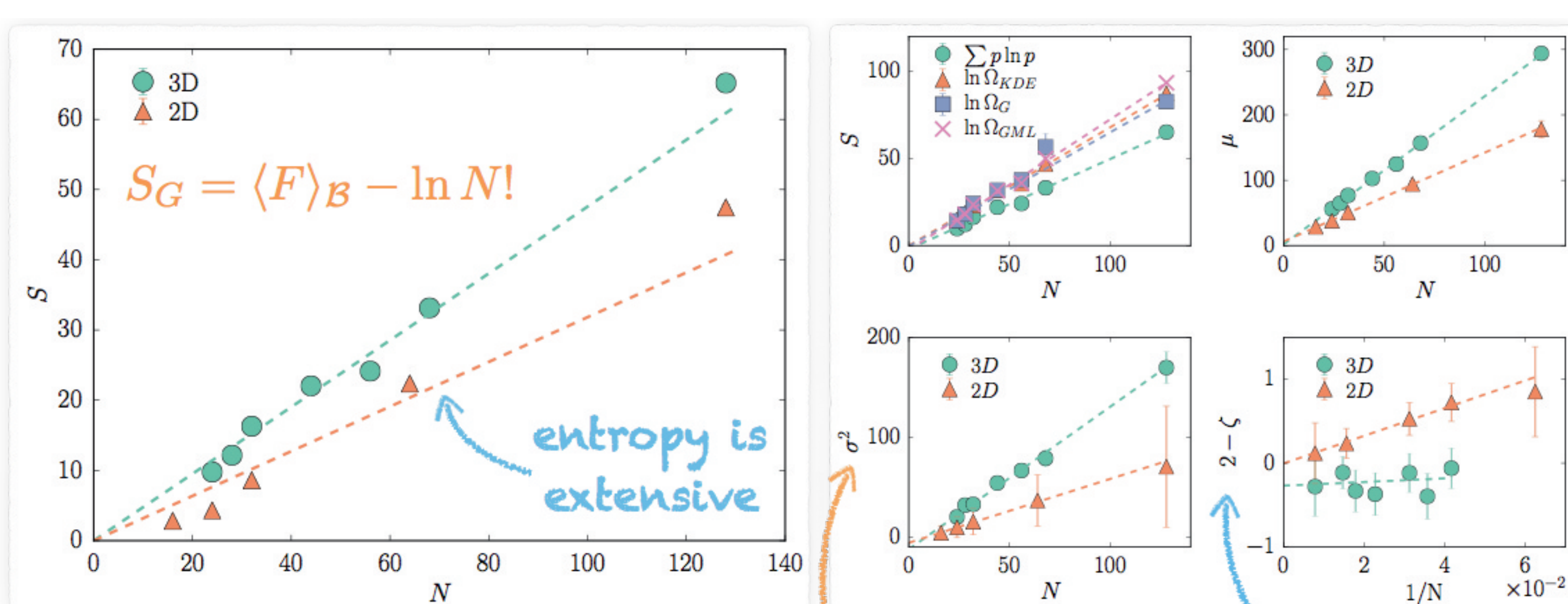
Measuring basin volumes



$$\langle f \rangle_B(\phi; \Lambda) = \lambda(\phi) \Delta \Lambda + \langle f \rangle_B(\phi)$$

Equiprobability at unjamming

Extensivity of entropy



$$\lambda(\phi \rightarrow \phi_{N \rightarrow \infty}^{*/J}) \sim 1/\chi \Lambda(\phi \rightarrow \phi_{N \rightarrow \infty}^{*/J}) \rightarrow 0$$

References:

Martiniani et al., arXiv:1610.06328 (2016)

Martiniani et al., PRE, 93, 012906 (2016)

Martiniani et al., PRE 94, 031301(R) (2016)